



- ELECTRICAL TESTERS • PROCESS TESTERS
- INTEGRATION SERVICES

## NEMA TEST CHAMBER

DESIGNED FOR  
TESTING THERMOSTATS  
AND THERMAL SWITCHES

- NEMA DC3 - 2013
- 32°F TO 105°F
- HEAT & COOL MODES
- 2 - 100 LINEAR FPM



NEMA DC3 TESTING REQUIRES A VERY TIGHTLY CONTROLLED TEMPERATURE CHAMBER AND ONE THAT PROVIDES RESULTS THAT ARE ACCURATE AND REPEATABLE.

VIDAC SOLUTIONS HAS OVER TWO DECADES OF EXPERIENCE BUILDING THESE UNITS. WE BUILD THEM TO TIGHTER TEMPERATURE CONTROL SPECS THAN NEMA STANDARDS REQUIRE.



[WWW.VIDACSOLUTIONS.COM](http://WWW.VIDACSOLUTIONS.COM)

636.305.9179

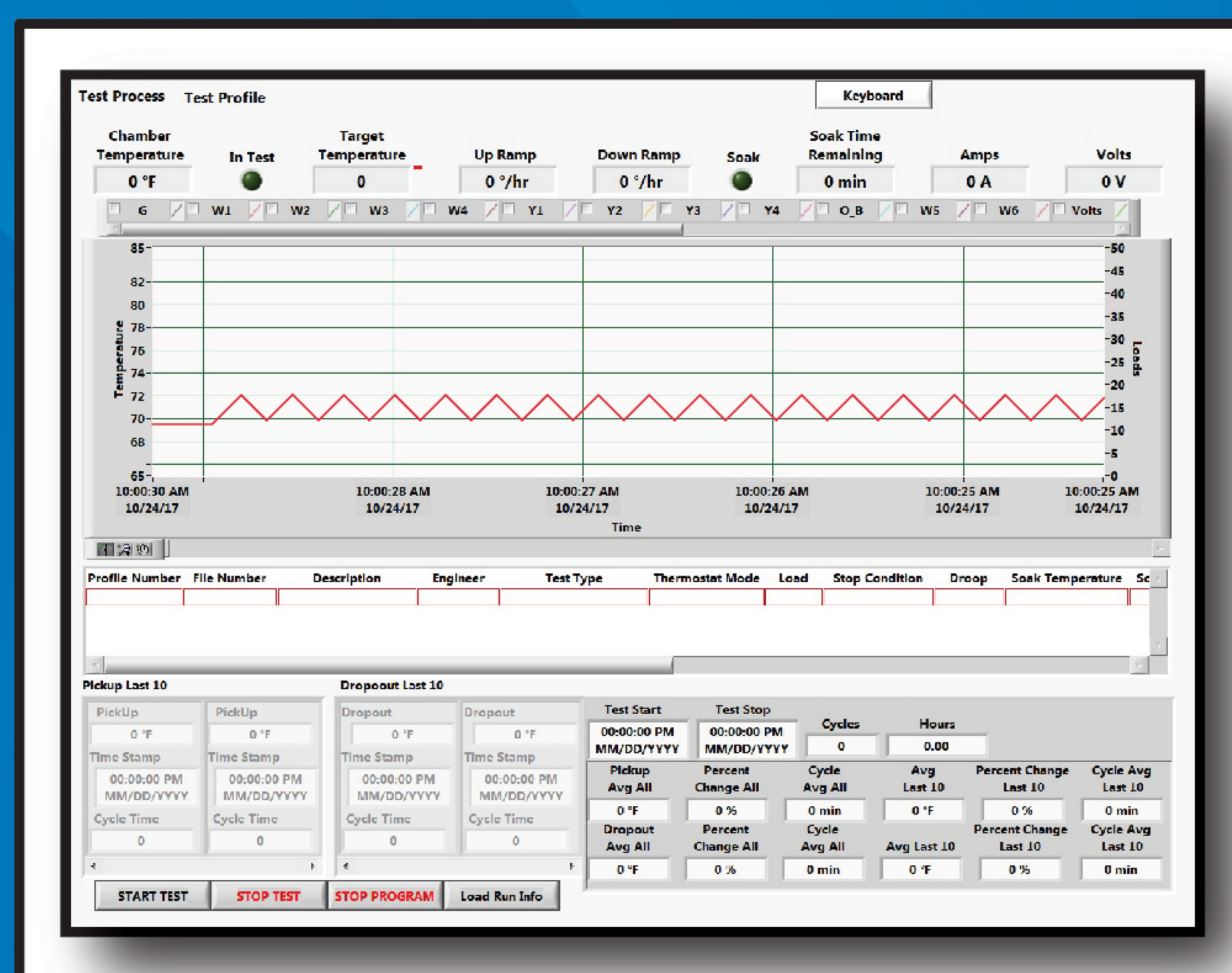




- ELECTRICAL TESTERS • PROCESS TESTERS
- INTEGRATION SERVICES

## STANDARD SYSTEM

- RAMP RATES FROM 1-12°F PER HOUR
- LAMINAR AIRFLOW OVER THE PRODUCT
- TOUCH SCREEN CONTROL
- YOKOGAWA MULTI-LOOP TEMPERATURE CONTROLLER WITH RTD FEEDBACK AT PRODUCT
- LABVIEW TEST PROGRAM
- SETTABLE TEST VOLTAGE (0-24 VAC STANDARD. 0-140 VAC AVAILABLE)
- INDIVIDUAL LOADS FOR EACH THERMOSTAT CONTROL, INDIVIDUALLY SETTABLE TO 0 2 AMPS EACH
- BUILT-IN AIRFLOW SENSOR AT PRODUCT
- ABILITY TO TEST LINE VOLTAGE (120-280 VAC) THERMOSTATS WITH HIGH CURRENT EXTERNAL LOAD TAPS
- TEMPERATURE RANGE: 40-95°F AT +/-0.05°F



TESTING THERMOSTATS REQUIRES BOTH ACCURATE TEMPERATURE CONTROL AND STABLE LAMINAR AIRFLOW. ACCOMPLISHING THIS REQUIRES THE USE OF DUAL AIRFLOW LOOPS SO THAT TEMPERATURE CHANGES DO NOT AFFECT AIRFLOW. OUR CHAMBERS CAN RAMP TEMPERATURE AT UP TO 12°/HOUR AND CAN MAINTAIN A WIDE RANGE OF AIRSPEED OVER THE PRODUCT.

[WWW.VIDACSOLUTIONS.COM](http://WWW.VIDACSOLUTIONS.COM)

636.305.9179





- ELECTRICAL TESTERS ● PROCESS TESTERS
- INTEGRATION SERVICES

## DIMENSIONS

THE ENVIRONMENTAL CHAMBER IS CONSTRUCTED OF INSULATED STAINLESS STEEL PANELS, ENCASED IN A MILD STEEL CABINET WITH EXTERNAL DIMENSIONS OF 33.5" (W) x 88" (H) x 47.5" (D).

THE CONTROL ENCLOSURE IS A MILD STEEL ENCLOSURE WITH EXTERNAL DIMENSIONS OF 27.5" (W) x 74" (H) x 47.5" (D).

THE CABINETS CAN BE PAINTED ACCORDING TO CUSTOMER DESIRE (WITHIN LIMITS)



## CONTINUOUS AUTOMATED TESTING

- DIFFERENTIAL OR STAGE SEPARATION TESTING
- OPERATION CAN BE SET FOR TIME IN HOURS OR NUMBER OF CYCLES
- REAL-TIME TEMPERATURE RISE/FALL VS. TIME CHART
- VARIABLE RAMP UP AND DOWN RATES
- TEMPERATURE SET POINT OF CHAMBER TO RUN BETWEEN 32 TO 105°F DEPENDING ON HUMIDITY CONDITIONS
- HEAT OR COOL MODE OF OPERATION

VOLTAGE TO THE LOAD CAN BE VARIED WITH VOLTAGE DISPLAY

INTERNAL 24VAC WITH VOLTAGE STABILITY CIRCUIT. THE 10 INTERNAL LOADS CAN BE CONFIGURED AS EITHER 0-30VAC, 0-50VAC, 0-120 VAC, OR ANY MIX THEROF.

RTD TEMPERATURE FEEDBACK WITHIN THE CHAMBER.

HUMIDITY CONTROL BASED ON SET POINT, WHICH CAN BE RELAYED FROM THE THERMOSTAT. HUMIDITY CONTROL WILL HAVE A LIMITED RANGE OF TEMPERATURE OPERATION.

[WWW.VIDACSOLUTIONS.COM](http://WWW.VIDACSOLUTIONS.COM)

636.305.9179